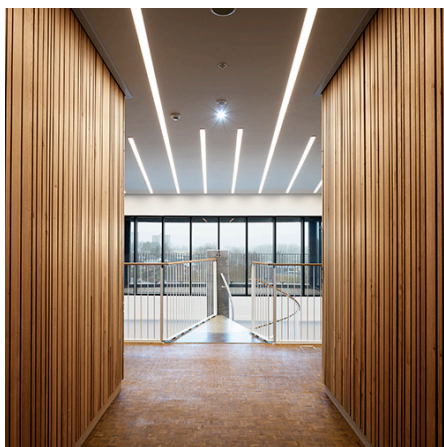


BANEDANMARK





BANEDANMARK, VESTERBRO, COPENHAGEN, DENMARK

[Architectural firm Tranberg](#) is responsible for the iconic, circular building that houses BaneDanmark on the historic siding yard at Fisketorvet and the Locomotive Workshop. The building, with its prominent brick facade, stands as a monument and creates a powerful visual presence in an area that is not yet fully developed. [Artist Signe Guttormsen](#) has contributed a cohesive interior concept inspired by the track areas and the old control towers, which once oversaw the complex network of tracks at the siding yard and main station.

This concept is manifested in a stringent, linear lighting system in the ceiling, consisting of built-in fixtures of varying lengths that form a pattern of lines reminiscent of the main threads binding a spider's web together. The building's circular form is further accentuated by the lighting design, which subtly follows and enhances the space. The result is a lighting solution that is both functional and aesthetically pleasing, reflecting BaneDanmark's role and history while adding a dynamic dimension to the building's architecture.

Photo: Jan Søndergaard

Produkt: Sculptural Lighting Concept

Material & finish: Powder coated aluminum profile with opal acrylic shade

Dimension: Luminaires in different lengths from 0,9 m to 8,2 m length

Light sources: LED light sources in 3000K

Safety classifications: I

Approval: CE

Remark: The luminaires are separately dimmable via DALI

Design: Signe Guttormsen. Foto Jan Søndergaard

Latest update: 28/02-2025