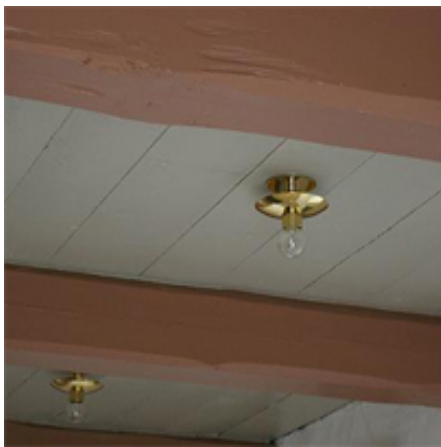


SCAN CEILING W/ARC SHADE. E27





SCAN CEILING W/ARC SHADE. E27

The SCAN CEILING is a minimalist ceiling lamp available with two shade variants: straight and arc.

Its minimalist design makes it highly suitable for repetitive installations. SCAN CEILING is versatile and can be mounted effectively at various installation heights.

The minimalist design allows it to integrate seamlessly into all types of architectural environments. It is particularly well-suited for repetitive installations.

SCAN CEILING is also available in several finishes, including patinated, white-lacquered, and black. Shades can also be customized in different variations.

The SCAN CEILING is also available as a pendant version. See under PENDANTS.

Material & finish: Lacquered brass - polished or matt. Aluminium - polished, matt or white lacquered (RAL 9010). Variants of shades: Acrylic - clear or satin polished. Brass - polished or brushed. Aluminum - polished or anodized. Opal acrylic.

Dimension: Shade diameter: 15 cm.

Light sources: Socket/holder: E27. Wattage: Max 60 W. 230V.

Lysteknik: The fixture creates a downward lighting effect through the small shade. The light source is unshielded, and therefore dimming is recommended. The two shade variants, curved and straight, create a decorative effect around the fixture.

Suspension: Mounting on a PL-junction box

Safety classifications: I.

Ingress protection: IP20.

Approval: CE-marking

Remark: SCAN CEILING is also available as a pendant. See under PENDANTS. Other material versions are available upon request.

Design: Robert Okholm

Latest update: 27/03-2025