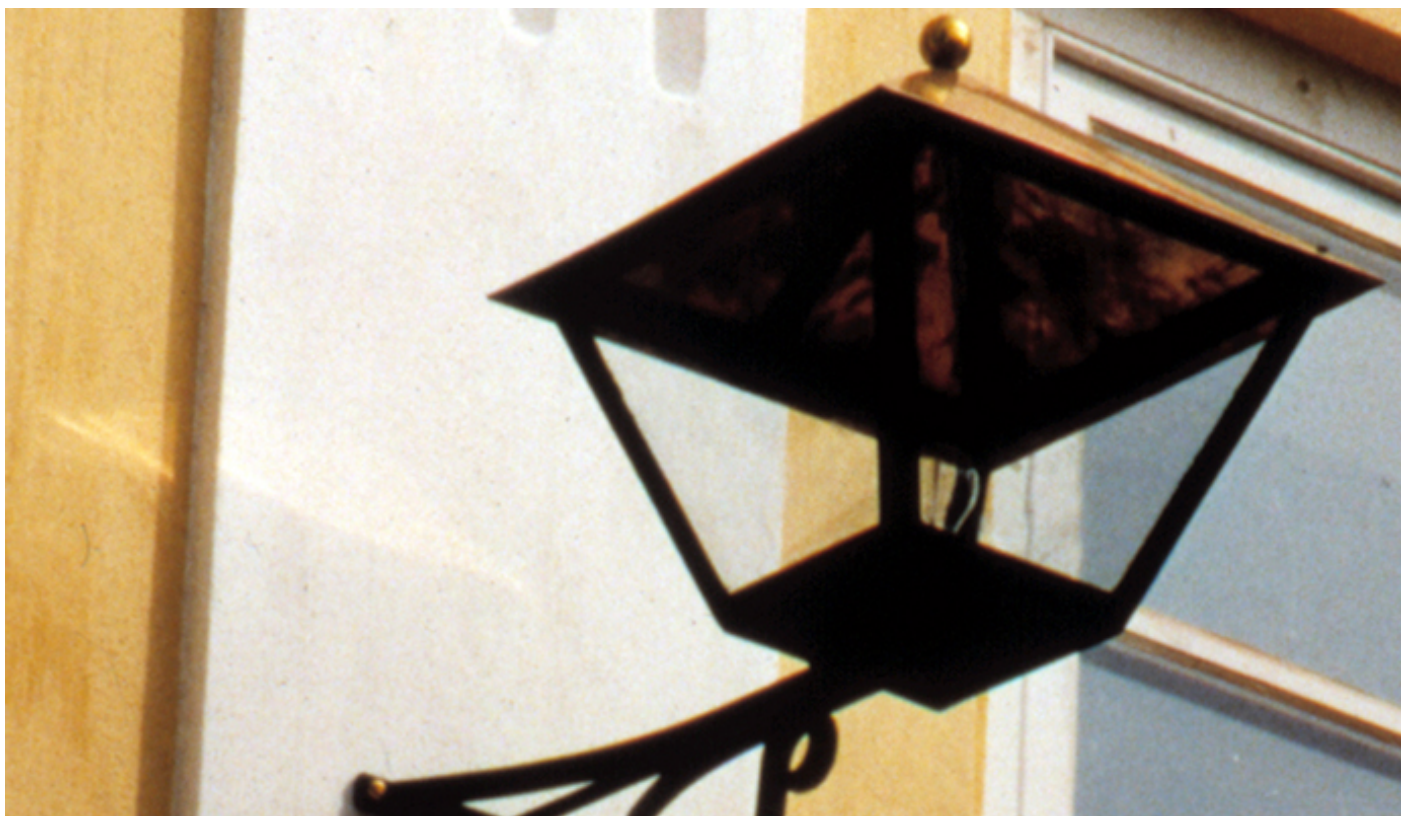


STENALT WALL





STENALT WALL

Outdoor lighting specially designed for Stenalt Manor on Djursland. The luminaire is crafted from black-lacquered wrought iron with clear antique glass, while the shade is made of untreated copper.

The STENALT WALL is a classically designed wall luminaire, making it an ideal choice for historic buildings. It was designed by [Jørgen Overby's architectural studio](#).

The STENALT WALL emits a decorative 360° light, enhancing the atmosphere by effectively illuminating both the surrounding area and the mounting surface. The open luminaire housing is fitted with antique glass, which has a slightly uneven and wavy surface, subtly distorting the light. This creates a vibrant, diffused, and more organic light distribution.

Produkt: STENALT WALL

Material & finish: Wrought iron and copper. With a brass bowl.

Dimension: Height: 465 mm incl. ball ø40 mm. Topshade: 445 x 445 mm. H = 160 mm. Fittinghouse: 200 x 200 mm and 390 x 390 mm. H = 270 mm. Length of wall arm: 400 mm to the border of the fittinghouse

Light sources: 1 outdoor lamp. Wattage: max. 60 W. 230 V. Socket/holder: E27.

Lysteknik: The wall lamp provides 360° illumination, lighting both the area and the wall surface. The copper top adds a warmer glow to the light distribution. Tysk:

Suspension: Mounted directly on the wall. Connection: 2x2.5 mm² terminal block + ground terminal. Concealed or exposed installation.

Safety classifications: I.

Ingress protection: IP23.

Approval: CE-marking.

Design: Jørgen Overby Architects

Latest update: 28/02-2025